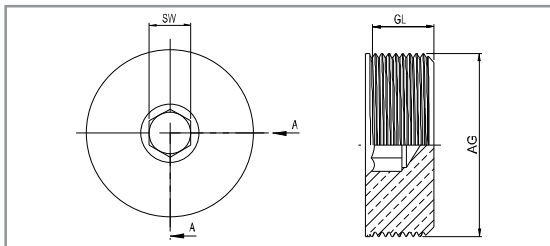


STOPPER PLUG



STOPPER PLUG

TECHNICAL DETAILS

Type	: TO TYPE STOPPER PLUG
Protection code	: I M2 Ex db I Mb / II M2 Ex eb I Mb II 2G Ex db IIC Gb / II 2G Ex eb II Gb II 1D Ex ta IIC Da
Certificate	: IEP 15 ATEX 0333U ATEX, ROHS, CE, PT, TUV
Material	: Brass, brass with nickel plated, stainless steel
Standards	: EN 60079-0 2012 /60079-1 2007/60079-7 2007 60079-31 2009
O-ring	: NBR / Silicone
Protection class	: IP66-IP68
Application area	: ZONE1 , ZONE 2 , ZONE 21 , ZONE 22 Gas groups IIA , IIB , IIC

PRODUCT RANGE OVERVIEW

Product Size	Product Code	GL min. mm	SW mm
M12 x 1.5	TO-XX-M12	15	6
M16 x 1.5	TO-XX-M16	15	8
M20 x 1.5	TO-XX-M20	15	10
M25 x 1.5	TO-XX-M25	15	10
M32 x 1.5	TO-XX-M32	15	10
M40 x 1.5	TO-XX-M40	15	10
M50 x 1.5	TO-XX-M50	15	10
M63 x 1.5	TO-XX-M63	15	10
M75 x 1.5	TO-XX-M75	15	14
M90 x 2	TO-XX-M90	20	14
M100 x 2	TO-XX-M100	20	14
NPT 1/4"	TO-XX-N14	15	6
NPT 3/8"	TO-XX-N38	15	8
NPT 1/2"	TO-XX-N12	15	10
NPT 3/4"	TO-XX-N34	15	10
NPT 1"	TO-XX-N100	15	10
NPT 1 1/4"	TO-XX-N114	18	10
NPT 1 1/2"	TO-XX-N112	18	10
NPT 2"	TO-XX-N200	18	10
NPT 2 1/2"	TO-XX-N212	28	14
NPT 3"	TO-XX-N300	28	14
NPT 4"	TO-XX-N400	28	14
G 1/4"	TO-XX-G14	15	6
G 3/8"	TO-XX-G38	15	8
G 1/2"	TO-XX-G12	15	10
G 3/4"	TO-XX-G34	15	10
G 1"	TO-XX-G100	15	10
G 1 1/4"	TO-XX-G114	15	10
G 1 1/2"	TO-XX-G112	15	10
G 2"	TO-XX-G200	15	10
G 2 1/2"	TO-XX-G212	20	14
G 3"	TO-XX-G300	20	14
G 4"	TO-XX-G400	20	14
PG7	TO-XX-P7	15	6
PG9	TO-XX-P9	15	8
PG11	TO-XX-P11	15	10
PG13,5	TO-XX-P13	15	10
PG16	TO-XX-P16	15	10
PG21	TO-XX-P21	15	10
PG29	TO-XX-P29	15	10
PG36	TO-XX-P36	15	10
PG42	TO-XX-P42	15	10
PG48	TO-XX-P48	15	10